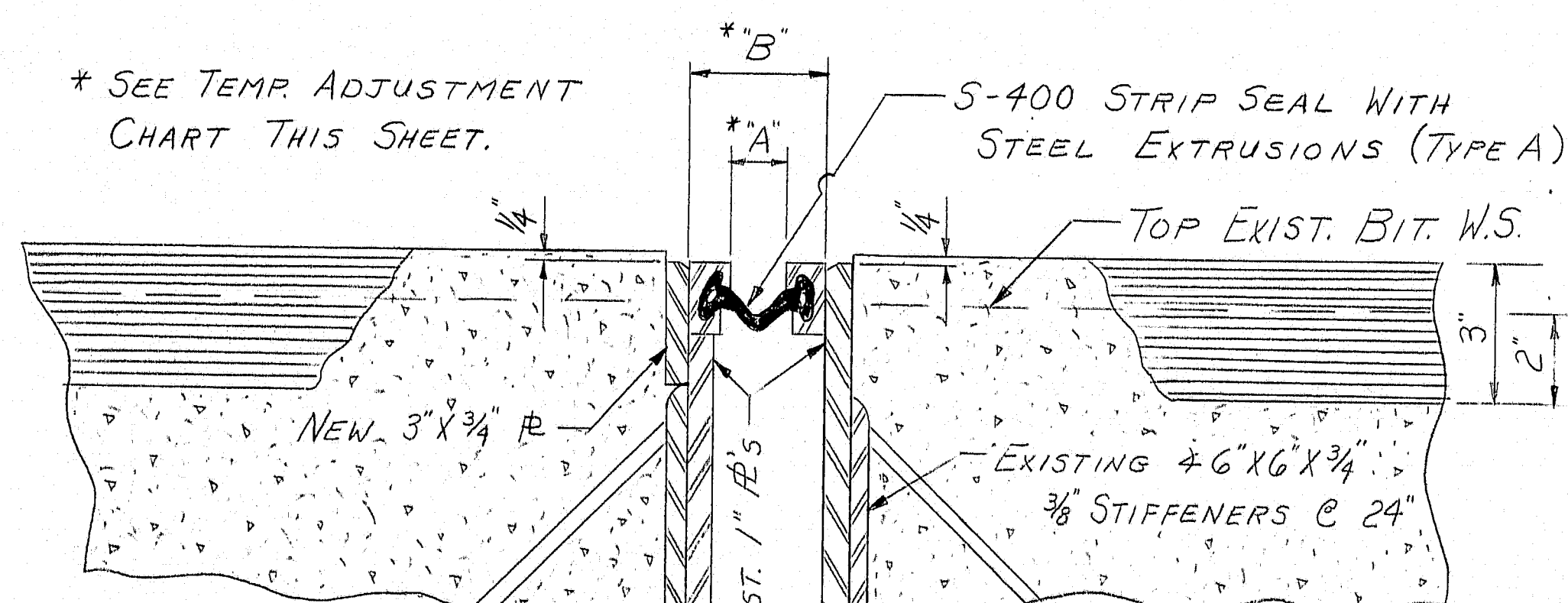


ONE-HALF TRANSVERSE SECTION



NOTE: CUT APPROX. 1" FROM EXIST. 1" R. WELD NEW R TO 1" R AND TO 3/4". WELD STEEL EXT TO NEW 3/4" R AND TO EXIST. 1" R.

NOTE: SHIM EXISTING 4 AND 1" R APPROX. 1" TO MATCH NEW W.S. WELD STEEL EXT TO 1" R.

SECTION A-A

## SCOPE OF WORK

REMOVE THE FOLLOWING ITEMS:  
EXISTING 2" BITUMINOUS CONCRETE WEARING SURFACE, EXISTING SCUPPERS, AND PORTION OF PARAPETS NECESSARY TO INSTALL NEW END POSTS.

INSTALL THE FOLLOWING ITEMS:  
NEW STRIP SEAL (S-400) WITH TYPE "A" STEEL EXTRUSIONS @ PIER, 4 NEW END POSTS, 2 NEW BRIDGE DRAINS (ATTACH TO EXISTING PIPE DOWN SIDE OF PIER), AND A NEW 3" BITUMINOUS CONCRETE WEARING SURFACE WITH MEMBRANE.  
ALSO ADJUST EXISTING 1" R AND INSTALL NEW 3/4" R FOR STEEL EXTRUSIONS (SEE SECTION A-A)

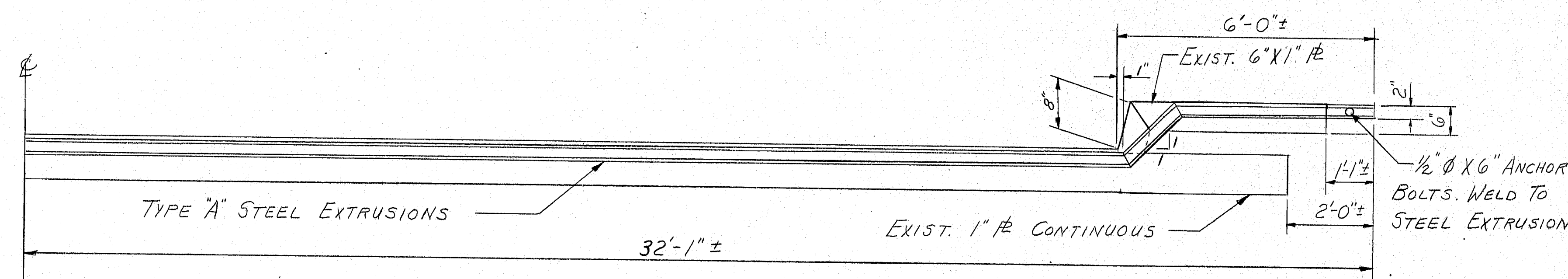
## MATERIALS

JOINTS:  
130 L.F. ± TYPE "A" STEEL EXTRUSIONS  
1-4" STRIP SEAL (S-400) 65' ± LONG  
4-1/2" Ø X 6" MACHINE BOLTS  
54 L.F. ± 3" X 3/4" R

DRAINS:  
8 L.F. ± 6" Ø STD. WT. STEEL PIPE  
2 L.F. ± BAR 1/2" X 1/2"  
4 L.F. ± #4 REBAR

WEARING SURFACE:  
1200 S.Y. ± MEMBRANE WATERPROOFING (INCLUDE PRIMER AND MASTIC)  
3" X 110 LBS. X 1100 S.Y. = 182 ± TONS H.B.P.  
2000

APPROACHES:  
(2) (50 X 52) (220 LBS.)  
2000 = 64 ± TONS H.B.P.



ELEVATION ~ ONE-HALF ARMORED JOINT

DEPRESS BIT. CONC. W.S. AROUND DRAINS 1/2" AS SHOWN BY ARROWS.

WELD 4-#4 REBARS 4"-6" LONG AS SHOWN APPROX. 3'-4" DOWN FROM TOP OF DRAIN.

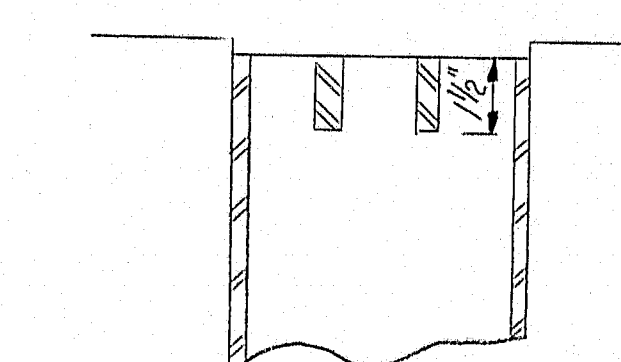
2-BARS 1/2" X 1/2" @ 2'± O.C. WELD AS SHOWN.

FACE OF CURB

2'-0" 2'-0"

TYP. > 3/16"

TYPICAL DRAIN SLOPE DETAIL 100-392



TEMPERATURE ADJUSTMENT CHART										
DIM.	TEMP. (F°)	10'	20'	30'	40'	50'	60'	70'	80'	90'
"A"	OPENING	2 1/8"	2 3/8"	2 1/2"	2 3/4"	2 1/2"	2"	1 7/8"	1 1/2"	1 1/8"
DIM.	TEMP. (F°)	10'	20'	30'	40'	50'	60'	70'	80'	90'
"B"	OPENING	5 1/8"	5 3/8"	5 1/2"	5 3/4"	5 1/2"	5"	4 7/8"	4 1/2"	4 1/8"

STATE OF MAINE  
DEPARTMENT OF TRANSPORTATION

BRIDGE NO. 5790  
OHIO STREET  
OVER  
INTERSTATE 95  
IN THE CITY OF  
BANGOR  
PENOBSCOT COUNTY  
BIT. CONC. W.S., STRIP SEALS

SHEET 1 OF 2 AUGUSTA, MAINE MARCH 1987

PROJECT	DESIGN	ENGINEER	DATE
PLANS	DESIGN - DETAILED		
	CHECKED		
	REVISIONS		
	FIELD CHANGES		

BRIDGING 441 132 277101